

GENERAL NOTES

1. THIS SKETCH IS NOT A SURVEY.
2. THE ELEVATIONS AND TREES SHOWN HEREON WERE TAKEN FROM THE CONSTRUCTION PLANS FOR WENTWORTH CLUB HOMES, PREPARED BY KING ENGINEERING ASSOCIATES, INC., JOB NO. 1924-000-001, DATED 12-21-12.

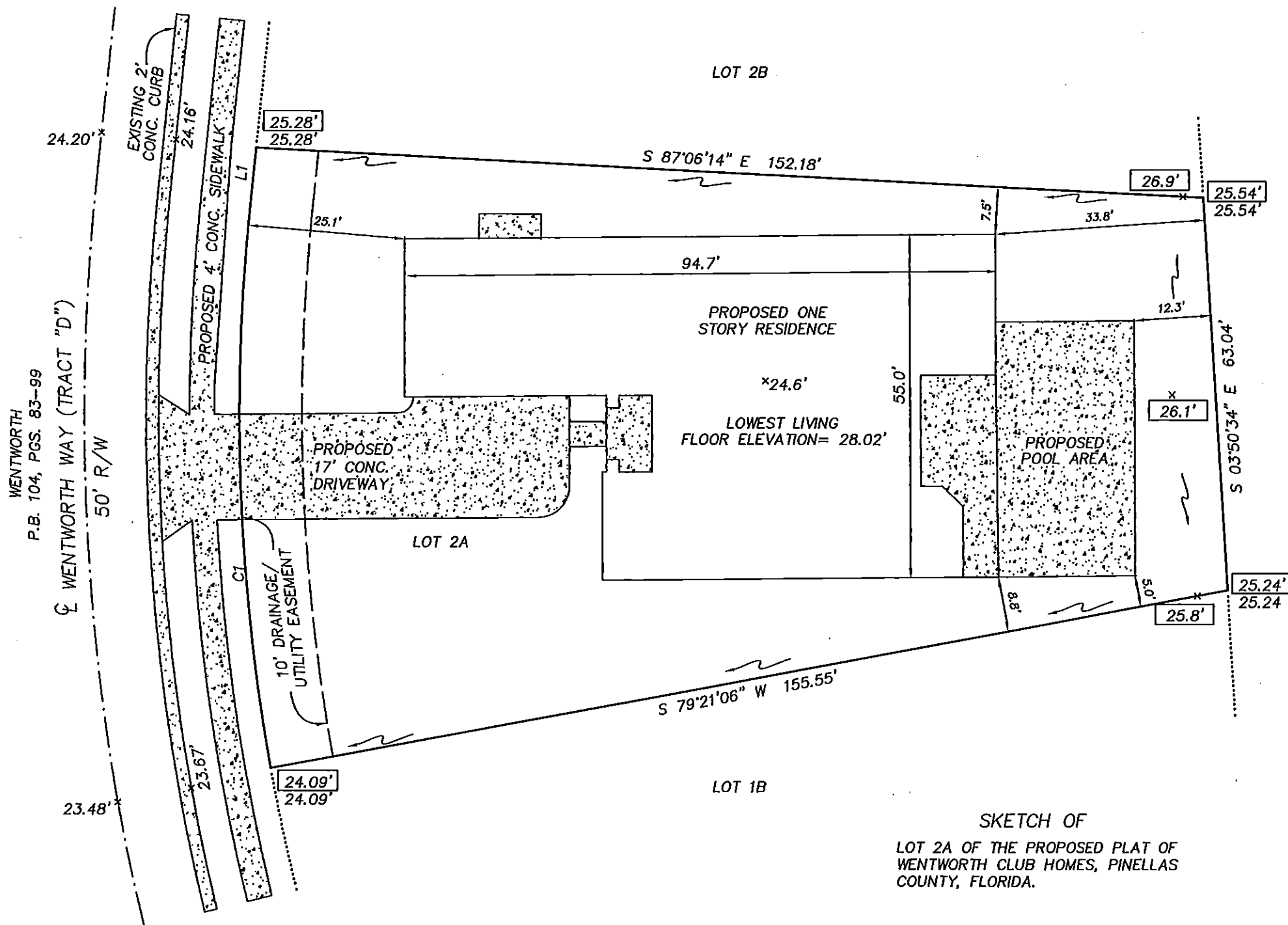


ASSUMED NORTH  
0' 10' 20'

LEGEND

- PG. = PAGE
- RNG. = RANGE
- SEC. = SECTION
- CONC. = CONCRETE
- TWP. = TOWNSHIP
- P.B. = PLAT BOOK
- ⊕ = CENTERLINE
- R/W = RIGHT-OF-WAY
- [Stippled Area] = CONCRETE
- [XX.XX'] = PROPOSED ELEVATION
- [Arrow] = DRAINAGE FLOW ARROW

GOLF COURSE  
TRACT "A"  
WENTWORTH  
P.B. 104, PG. 83-99



SKETCH OF  
LOT 2A OF THE PROPOSED PLAT OF  
WENTWORTH CLUB HOMES, PINELLAS  
COUNTY, FLORIDA.

PRECISION SURVEYING & MAPPING, INC.

CERTIFICATE OF AUTHORIZATION NO. LB-6734

5223 HUNTERS RIDGE DRIVE  
NEW PORT RICHEY, FLORIDA 34655  
727-841-8414

*Jon S. Robbins* 5.16.13  
JON S. ROBBINS DATE  
PROFESSIONAL SURVEYOR AND MAPPER NO. 4452  
NOT VALID WITHOUT THE SIGNATURE AND THE ORIGINAL RAISED  
SEAL OF A FLORIDA LICENSED SURVEYOR AND MAPPER.

LINE	BEARING	DISTANCE
L1	S 05°22'40" W	8.86'

CURVE	CENTRAL ANGLE	RADIUS	ARC LENGTH	CHORD LENGTH	CHORD BEARING
C1	16°02'03"	324.82'	90.90'	90.60'	N 02°38'15" W

WORK ORDER NO: 130041  
FOR: DEEB FAMILY HOMES  
DATE OF SKETCH: MAY 16, 2013

F.B. N/A  
P.G. N/A

DRAWN BY: J.M.M.  
CHK'D BY: J.S.R.