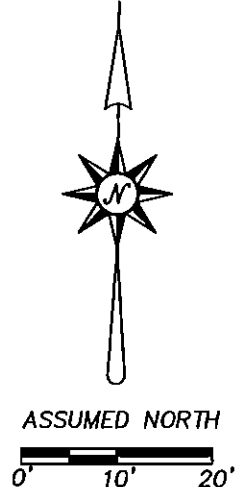
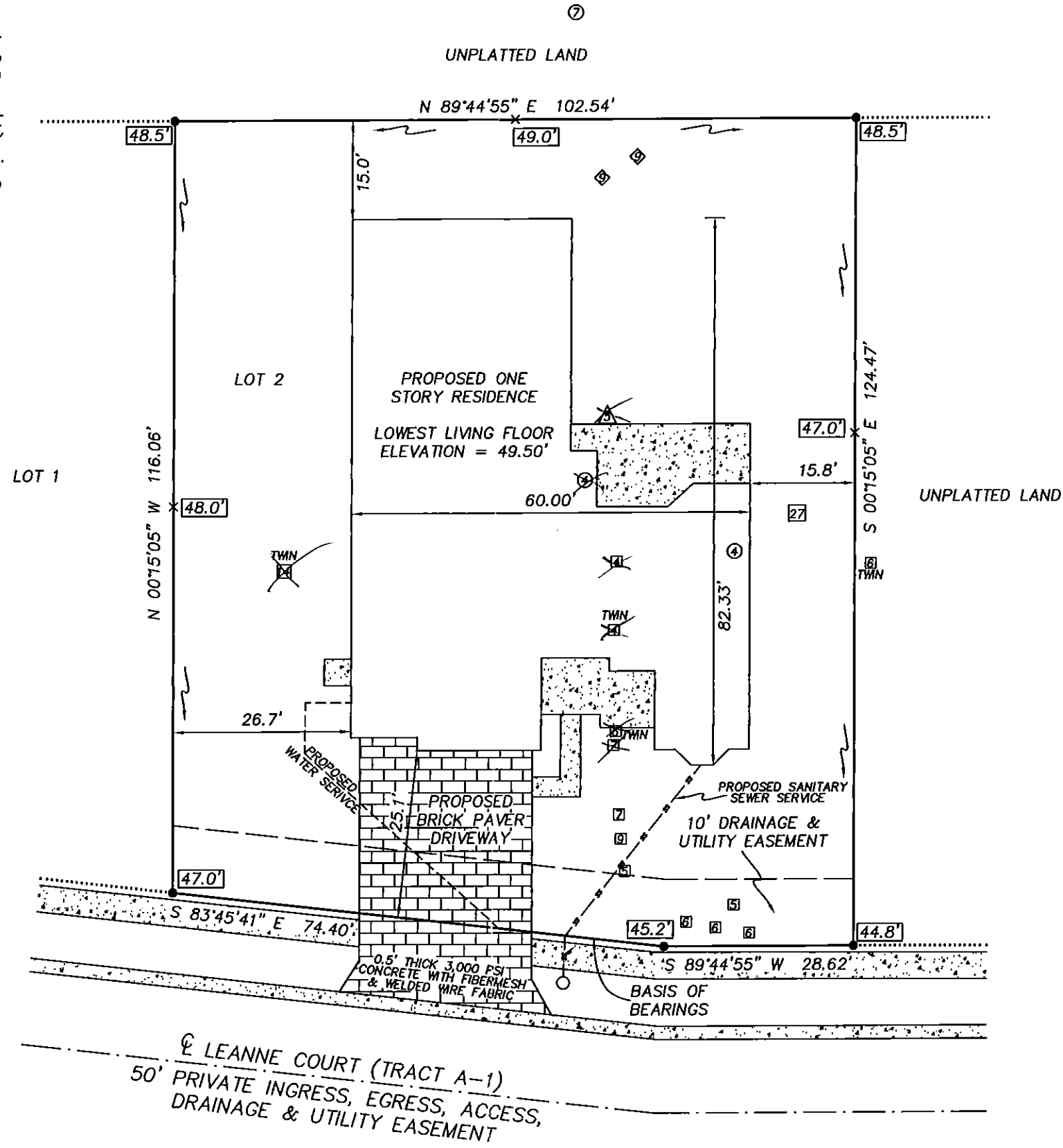


GENERAL NOTES

1. THIS SKETCH IS NOT A SURVEY.
2. BEARINGS, IF SHOWN, ARE BASED ON THE RIGHT-OF-WAY LINE ADJACENT TO THE PARCEL SURVEYED AS SHOWN ON THE RECORDED PLAT REFERENCED IN THE PROPERTY DESCRIPTION, UNLESS STATED OTHERWISE.
3. THE ELEVATIONS AND TREES SHOWN HEREON WERE TAKEN FROM THE CONSTRUCTION PLANS FOR RENAISSANCE OAKS FIRST ADDITION PREPARED BY NORTHSIDE ENGINEERING SERVICES, INC. PROJECT NO. 1104, DATED 06/21/11.
4. OUTDOOR AIR CONDITIONING UNIT WILL BE COMPLETELY SCREENED ON ALL FOUR SIDES BY LANDSCAPING.



LEGEND

- RNG. = RANGE
- SEC. = SECTION
- CONC. = CONCRETE
- TWP. = TOWNSHIP
- ⊙ = CENTERLINE
- [] = CONCRETE
- [] = BRICK PAVERS
- [xx.xx] = PROPOSED ELEVATION
- = DRAINAGE FLOW ARROW
- [M.E.] = MATCH EXISTING ELEVATION
- △ = PINE TREE - DIAMETER IN INCHES
- ⊙ = OAK TREE - DIAMETER IN INCHES
- ◇ = MAPLE TREE - DIAMETER IN INCHES
- ⊠ = TAMARIND TREE - DIAMETER IN INCHES
- = SANITARY SEWER CLEAN OUT

SKETCH OF

LOT 2, RENAISSANCE OAKS FIRST ADDITION AS SHOWN ON THE PLAT RECORDED IN PLAT BOOK 137, PAGES 71 THROUGH 72 OF THE PUBLIC RECORDS OF PINELLAS COUNTY, FLORIDA.

PRECISION SURVEYING & MAPPING, INC.

CERTIFICATE OF AUTHORIZATION NO. LB-6734
 5223 HUNTERS RIDGE DRIVE
 NEW PORT RICHEY, FLORIDA 34655
 727-841-8414

Jon S. Robbins 9-26-12
 JON S. ROBBINS DATE
 PROFESSIONAL SURVEYOR AND MAPPER NO. 4452
 NOT VALID WITHOUT THE SIGNATURE AND THE ORIGINAL RAISED SEAL OF A FLORIDA LICENSED SURVEYOR AND MAPPER.

WORK ORDER NO: 120070
 FOR: DEEB FAMILY HOMES
 DATE OF SKETCH: SEPTEMBER 26, 2012

LEANNE COURT (TRACT A-1)
 50' PRIVATE INGRESS, EGRESS, ACCESS,
 DRAINAGE & UTILITY EASEMENT