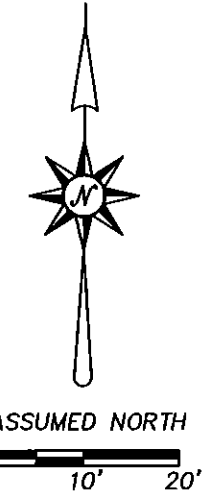
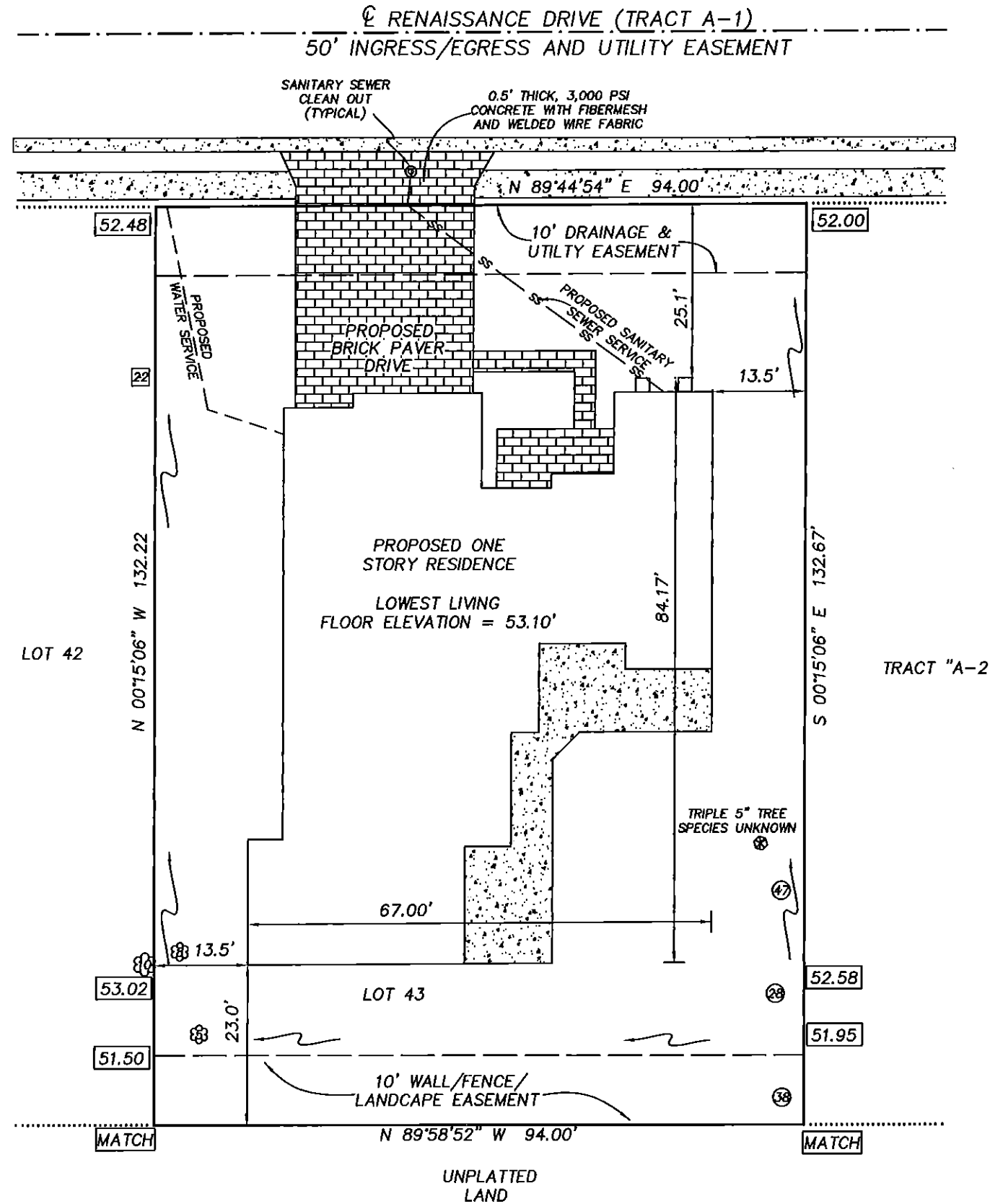


GENERAL NOTES

1. THIS SKETCH IS NOT A SURVEY.
2. BEARINGS, IF SHOWN, ARE BASED ON THE RIGHT-OF-WAY LINE ADJACENT TO THE PARCEL SURVEYED AS SHOWN ON THE RECORDED PLAT REFERENCED IN THE PROPERTY DESCRIPTION, UNLESS STATED OTHERWISE.
3. ELEVATIONS SHOWN HEREON WHERE TAKEN FROM THE CONSTRUCTION PLANS FOR RENAISSANCE OAKS SUBDIVISION, PREPARED BY GOVERNALE ENGINEERING SERVICES, INC. DATED 11/12/04.
4. OUTDOOR AIR CONDITIONING UNIT WILL BE COMPLETELY SCREENED ON ALL FOUR SIDES BY LANDSCAPING.



SKETCH OF
LOT 43, RENAISSANCE OAKS, AS SHOWN ON
THE PLAT RECORDED IN PLAT BOOK 133, PAGES
3 THROUGH 7 OF THE PUBLIC RECORDS OF PINELLAS
COUNTY, FLORIDA.



LEGEND

- RNG. = RANGE
- SEC. = SECTION
- CONC. = CONCRETE
- TWP. = TOWNSHIP
- ⊕ = CENTERLINE
- [Stippled Box] = CONCRETE
- [Brick Pattern Box] = BRICK PAVERS
- ⊙ = OAK TREE - DIAMETER IN INCHES
- ⊠ = PINE TREE - DIAMETER IN INCHES
- ⊗ = PALM TREE - DIAMETER IN INCHES
- [XX.XX] = PROPOSED ELEVATION
- = DRAINAGE FLOW ARROW

PRECISION SURVEYING & MAPPING, INC.

CERTIFICATE OF AUTHORIZATION NO. LB-6734

5223 HUNTERS RIDGE DRIVE
NEW PORT RICHEY, FLORIDA 34655
727-841-8414

Jon S. Robbins 11-8-12
JON S. ROBBINS DATE
PROFESSIONAL SURVEYOR AND MAPPER NO. 4452
NOT VALID WITHOUT THE SIGNATURE AND THE ORIGINAL RAISED SEAL OF A FLORIDA LICENSED SURVEYOR AND MAPPER.

WORK ORDER NO: 120099
FOR: DEEB FAMILY HOMES
DATE OF SKETCH: NOVEMBER 7, 2012

F.B. N/A
P.G. N/A

DRAWN BY: J.M.M.
CHK'D BY: J.S.R.

B:\Deeb Family Homes\120099\Cadd\120099 Site Plan.dwg, 11/8/2012 8:26:13 AM, Kyocera TASKalfa 3500i KX