

OUTDOOR GRILLE DETAILS
3/16" = 1'-0"

FLOOR PLAN NOTES

- 1 DRYER VTR IN 6" WALL
- 2 HANSON BOX @ 42" AFF
- 3 12" WIRE SHELF @ 5'-6" AFF
- 4 TOP OF TUB PLATFORM @ 20" AFF
- 5 16" D TILED SHOWER SEAT @ 16" ABV. SHWR FLR
- 6 TOP OF TILED SHELF @ 20" AFF
- 7 TUB ACCESS
- 8 22" X 54" CLG ACCESS
- 9 22" X 36" CLG ACCESS
- 10 (4) 16" SHELVES
- 11 16" SHELF
- 12 TOP OF BAR @ 42" AFF
- 13 TOP OF TEMPERED GLASS SHOWER ENCLOSURE @ 7" AFF
- 14 AIR HANDLER UNIT ON PLATFORM
- 15 AREA OF A/C TRUSSES
- 16 INSTALL 1/4" WATER LINE FOR ICEMAKER
- 17 R-13 BATT INSULATION
- 18 16" W X 6" D FIREPLACE COLUMNS TYP.
- 19 COUNTERTOP @ 36" AFF/OPEN BELOW
- 20 2850 TEMPERED F.G. HD @ 8" AFF
- 21 (4) 20" SHELVES
- 22 LOAD BEARING WALL
- 23 CHIMNEY CHASE
- 24 22"D X 36" H BASE CABINET W/12" D BOOKCASE ABOVE TO 8" AFF.
- 25 GARAGE SHALL HAVE MINIMUM FIRE SEPARATIONS FOR WALLS, DOORS AND CEILINGS PER FBC R302. GARAGE DOOR TO BE SELF CLOSING PER FBC R302.5.1

SQUARE FOOTAGES

MAIN FLR. LIVING AREA:	1762 S.F.
2ND FLR. LIVING AREA:	1207 SF
TOTAL LIVING AREA:	2969 SF
GARAGE:	416 S.F.
2ND FLR COV. DECK	232 S.F.
LANAI:	167 S.F.
ENTRY:	120 SF
TOTAL:	3904 SF

NOTED FLOOR PLAN

SCALE: 1/8" = 1'-0"

LOT 16
SAFETY HARBOR
352 HAMILTON AVENUE

2. PRELIMINARY PLAN / 2ND FLR REV.
3. PRELIMINARY PLAN - GRILLE LOCATION REV.
4. 2ND FLOOR WINDOW/CLOSET REVS.
5. STRUCT. ENG.

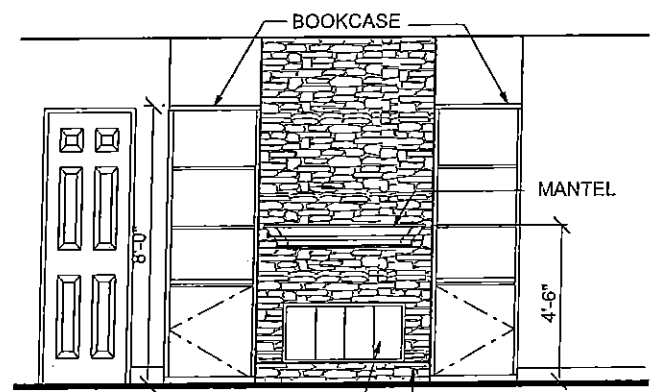
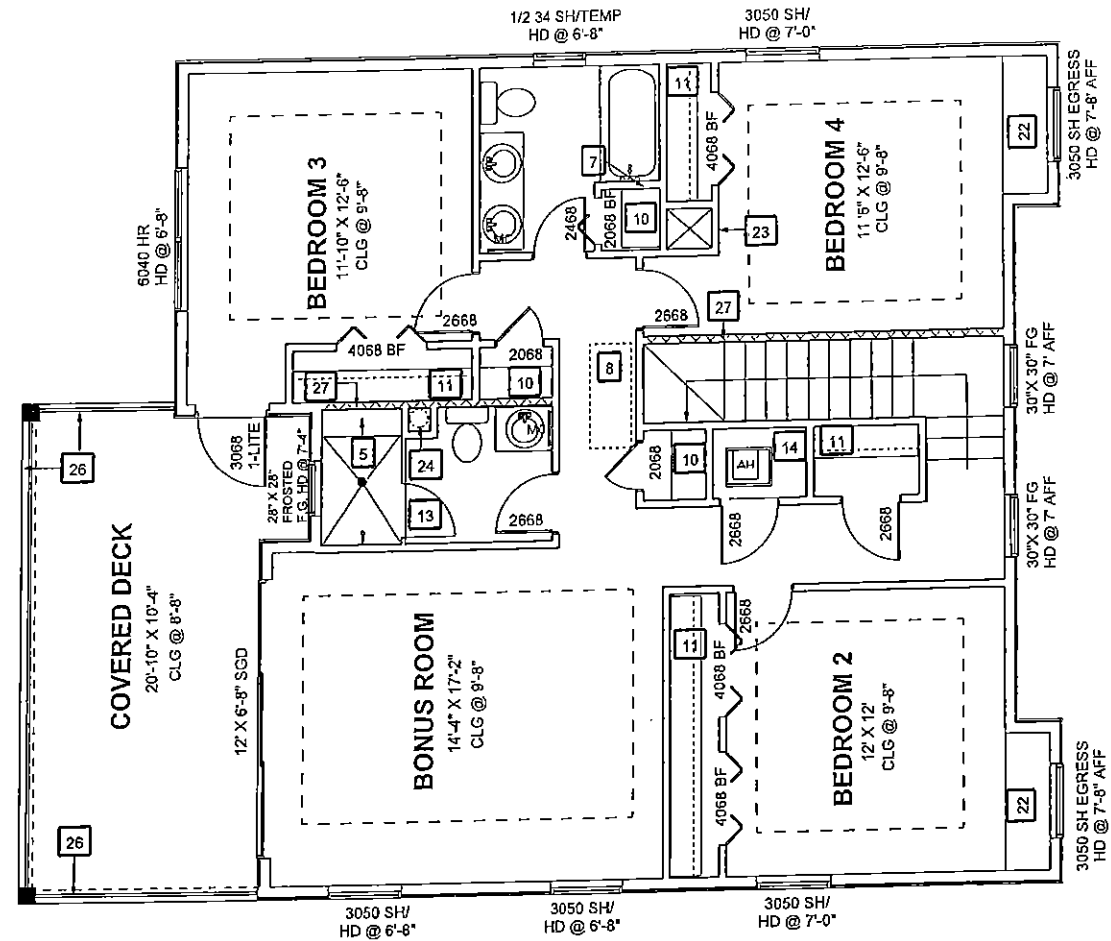
PLAN DATE	1. 05-11-2016
	2. 05-12-2016
	3. 05-17-2016
	4. 05-18-2016
	5. 05-25-2016

DEEB FAMILY
HOMES, LTD.
9400 RIVER CROSSING BLD.
NEW PORT RICHEY, FL. 34655

2

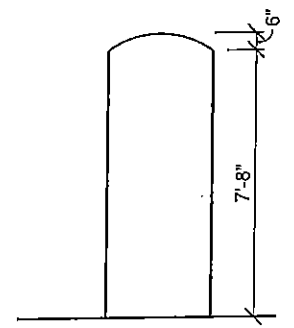
FLOOR PLAN NOTES

- 1 DRYER VTR IN 6" WALL
- 2 HANSON BOX @ 42" AFF
- 3 12" WIRE SHELF @ 5'-6" AFF
- 4 TOP OF TUB PLATFORM @ 20" AFF
- 5 16" D TILED SHOWER SEAT @ 16" ABV. SHWR FLR
- 6 TOP OF TILED SHELF @ 20" AFF
- 7 TUB ACCESS
- 8 22" X 54" CLG ACCESS
- 9 22" X 36" CLG ACCESS
- 10 (4) 16" SHELVES
- 11 16" SHELF
- 12 TOP OF BAR @ 42" AFF
- 13 TOP OF TEMPERED GLASS SHOWER ENCLOSURE @ 7' AFF
- 14 AIR HANDLER UNIT ON PLATFORM
- 15 AREA OF A/C TRUSSES
- 16 INSTALL 1/4" WATER LINE FOR ICEMAKER
- 17 R-13 BATT INSULATION
- 18 16" W X 6" D FIREPLACE COLUMNS TYP.
- 19 COUNTERTOP @ 36" AFF/OPEN BELOW
- 20 2850 TEMPERED F.G. HD @ 8" AFF
- 21 (4) 20" SHELVES
- 22 WINDOW SEAT
- 23 A/C CHASE FROM CLG. TO FLOOR SYSTEM
- 24 CHIMNEY CHASE
- 25 RECESSED WALL NICHE: TOP @ 42" AFF
W/WALL BELOW, HEAD @ 7' AFF
- 26 42"H GUARDRAIL
- 27 LOAD BRNG. WALL



INSTALL 42" PREFAB FIREPLACE OVER 8" CMU BLOCK PER MANUFACTURE'S INSTALLATION INSTRUCTIONS.

FAMILY ROOM WALL ELEVATION
3/16" = 1'-0"



TYPICAL ARCHED HEADER DETAIL
3/16" = 1'-0"

PLAN 2969

SCALE: 1/8" = 1'-0"

NOTED 2ND FLOOR PLAN

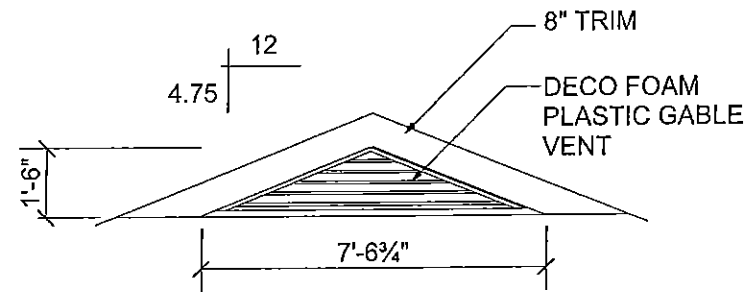
LOT 16
SAFETY HARBOR
352 HAMILTON AVENUE

2. PRELIMINARY PLAN / 2ND FLR REV.
3. PRELIMINARY PLAN - GRILLE LOCATION REV.
4. 2ND FLOOR WINDOW/CLOSET REVS.
5. STRUCT. ENG.

PLAN DATE	DESCRIPTION
1. 05-11-2016	
2. 05-12-2016	
3. 05-17-2016	
4. 05-18-2016	
5. 05-25-2016	

DEEB FAMILY
HOMES, LTD.
9400 RIVER CROSSING BLD.
NEW PORT RICHEY, FL. 34655

2A



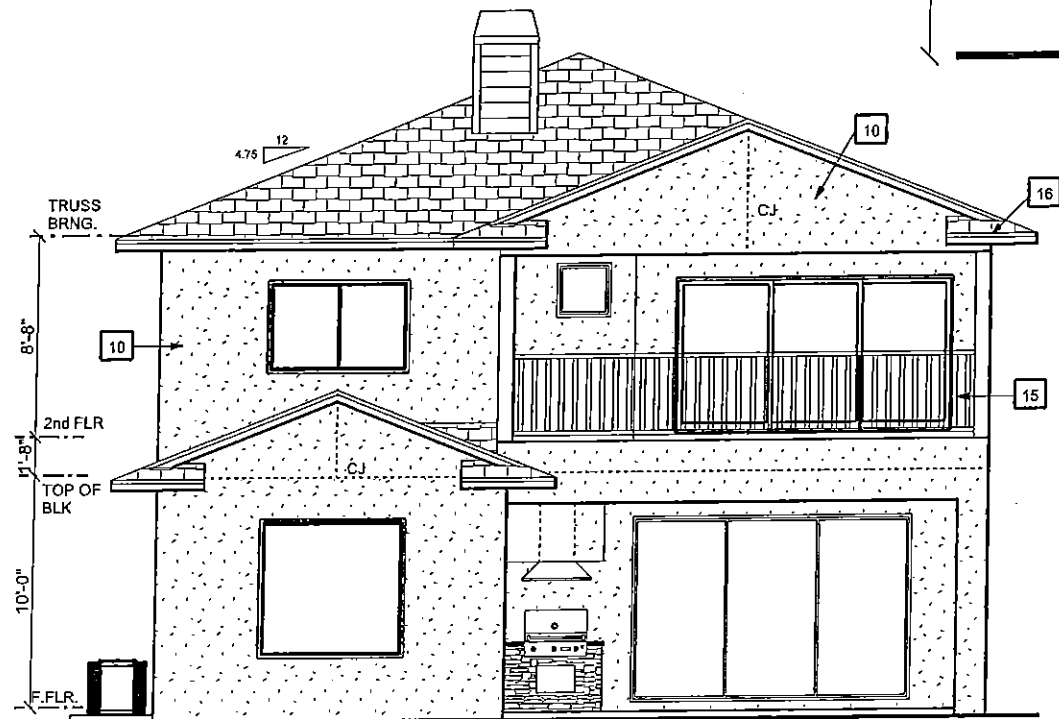
NOTE: FIELD VERIFY GABLE CLEARANCES PRIOR TO FABIRICATION

DECO GABLE VENT DETAIL



FRONT ELEVATION

3/16" = 1'-0"



REAR ELEVATION

ELEVATION NOTES

- 1 HORIZONTAL 8" LAP CEMENT BOARD SIDING
- 2 CEMENT BOARD CORNER TRIM
- 3 4" CEMENT BOARD TRIM
- 4 5/8" STUCCO OVER CMU
- 5 16" W PLASTIC DECORATIVE WINDOW SHUTTERS
- 6 DIMENSIONAL FIBERGLASS SHINGLES
- 7 5V CRIMP GALV. METAL ROOF
- 8 6" X 6" SQUARE COLUMNS ON 32" W X 12"D CMU BASE W/FAUX STONE VENEER (4) SIDES
- 9 6" SMOOTH BANDING
- 10 7/8" STUCCO FINISH PER ASTM C-926-11a ON PAPER BACKED METAL LATH OVER TYVEK (OR EQUIVALENT) VINYL VAPOR BARRIER ON EXTERIOR WOOD SHEATHING
- 11 FRIEZE BOARD W/8" REVEAL
- 12 3-LAYER FASCIA (TYP. FRONT ELEV)
- 13 PRE-FAB DECO METAL PORCH RAILING
- 14 54" X 30" FIXED GLASS (BLACKED OUT)
- 15 42" H METAL GUARD RAILING
- 16 2-LAYER FASCIA
- 17 DECO TRIANGULAR LOUVER PER DETAIL THIS SHEET
- 18 6" H COLUMN CAP AND BASE

FRONT AND REAR ELEVATIONS

SCALE: 1/8" = 1'-0"

A.E.C.S. #16045

PLAN 2969

PLAN DATE
1. 05-11-2016
2. 05-12-2016
3. 05-17-2016
4. 05-18-2016
5. 05-25-2016

DEEB FAMILY HOMES, LTD.
9400 RIVER CROSSING BLD.
NEW FORT RICHEY, FL. 34655

LOT 16 SAFETY HARBOR
352 HAMILTON AVENUE
2. PRELIMINARY PLAN/2ND FLR REV.
3. PRELIMINARY PLAN/GRILLE LOCATION REV.
4. 2ND FLR WINDOW/CLOSET REVS.
5. STRUCT. ENG.

I HEREBY CERTIFY THAT I HAVE REVIEWED THESE PLANS AND I AM PROVIDING THIS INFORMATION TO YOU WITH MY BEST AND ULTIMATE WIND LOADS EXPOSURE AND IT IS IN COMPLIANCE WITH CHAPTER 16 OF THE 2014 FLORIDA BUILDING CODE. SEALED FOR THIS STRUCTURE ONLY.
SIGNED: [Signature]
RICHARD E. ALLEN P.E. #56920

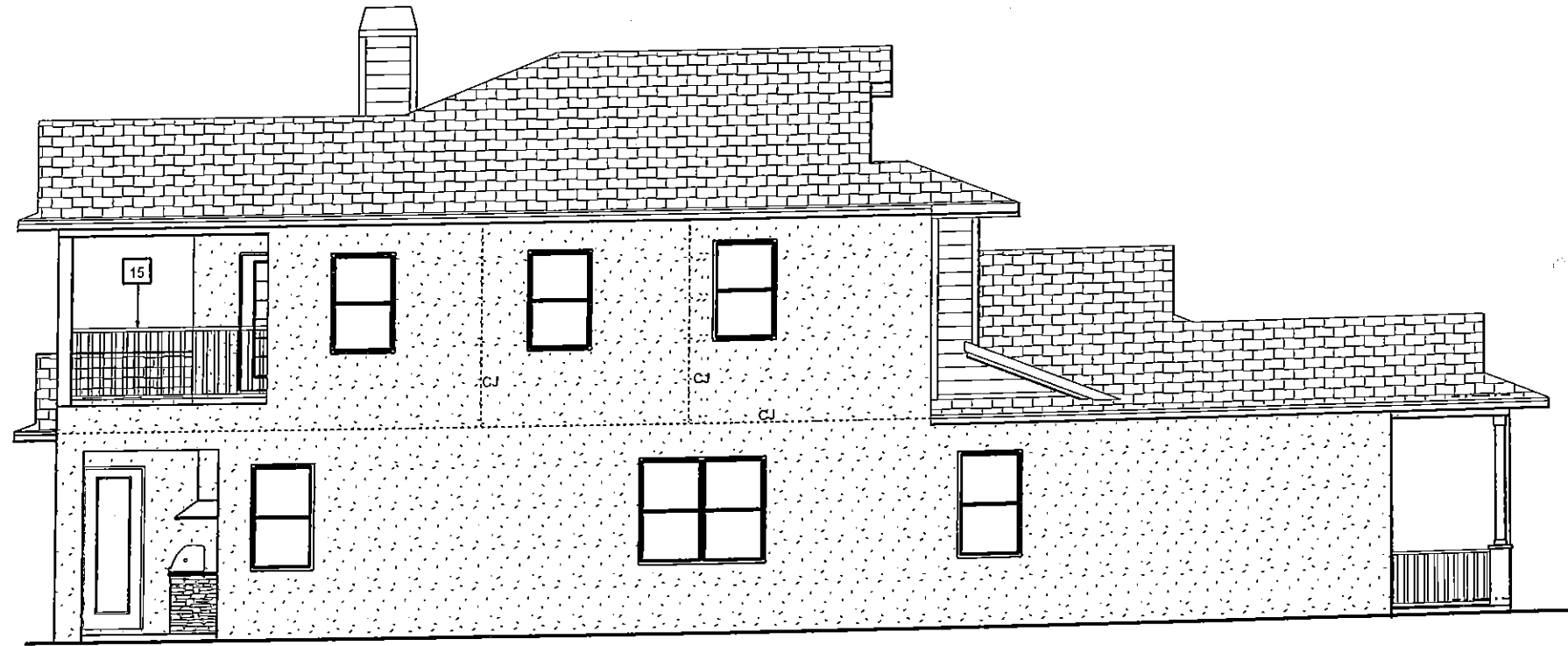
ALLEN ENGINEERING & CONSTRUCTION SERVICES
RICH ALLEN PROFESSIONAL ENGINEER
P.E. #56920 C.A. #9542
NEW FORT RICHEY, FL. 34654
727-842-6100
richallenpe@gmail.com

4

SEE SHEET 4 FOR
ELEVATION KEYNOTE
LEGEND



RIGHT ELEVATION



LEFT ELEVATION

PLAN 2969

SCALE: 1/8" = 1'-0"

SIDE ELEVATIONS

LOT 16
SAFETY HARBOR
352 HAMILTON AVENUE

2. PRELIMINARY PLAN / 2ND FLR REV.
3. PRELIMINARY PLAN - GRILLE LOCATION REV.
4. 2ND FLOOR WINDOW/CLOSET REVS.
5. STRUCT. ENG.

PLAN DATE

1.	05-11-2016
2.	05-12-2016
3.	05-17-2016
4.	05-18-2016
5.	05-25-2016

DEEB FAMILY
HOMES, LTD.
9400 RIVER CROSSING BLD.
NEW PORT RICHEY, FL. 34655

5